

2012-2013

RUBEX™

Interchangeable Hub Propellers

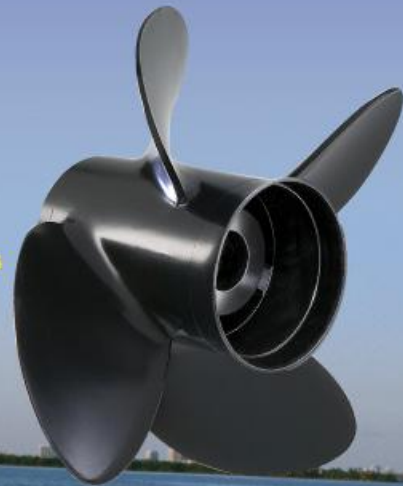
- SOLAS High Performance / Rubber Hub
- Interchangeable with Flo-Torq & Vortex System
- Available: 3 - Blade & 4 - Blade Propellers
Aluminum & Stainless Steel Propellers



(Hub Kit Not Included)
RBX Patent No : U.S 7,488,225



(Hub Kit Not Included)
RBX Patent No : U.S 7,488,225



Solas New Zealand

solas.propellers.co.nz

RUBEX™ ALUMINUM

Interchangeable Hub Propellers

C 30~ 75 Horsepower (Thru Hub Exhaust)

Aluminum 3 blade

RUBEX 3 RBX Rubber Hub

B	D	P	R	PART NO.
3	11.4	12	R	9311-114-12
3	11.1	13	R	9311-111-13
3	11.1	14	R	9311-111-14
3	11	15	R	9311-110-15

NEW!
NEW!

ALUMINUM
PROPELLERS



D 40~ 140 Horsepower (Thru Hub Exhaust)

Aluminum 3 blade

RUBEX 3 RBX Rubber Hub

B	D	P	R	PART NO.
3	14	9	R	9411-140-09
3	14	11	R	9411-140-11
3	13.75	13	R	9411-138-13
3	13.5	15	R	9411-135-15
3	13.25	17	R	9411-133-17
3	13.2	19	R	9411-132-19
3	13.2	21	R	9411-132-21

Aluminum 3 blade

RUBEX 3 Plus RBX Rubber Hub

B	D	P	R	PART NO.
3	13.875	17	R	9411-139-17
3	13.875	19	R	9411-139-19
3	13.875	21	R	9411-139-21

Aluminum 4 blade

RUBEX 4 RBX Rubber Hub

B	D	P	R	PART NO.
4	13.25	13	R	9413-133-13
4	13	15	R	9413-130-15
4	12.75	17	R	9413-128-17
4	12.5	19	R	9413-125-19

E 135~ 300 Horsepower (Thru Hub Exhaust)

Aluminum 3 blade

RUBEX 3 RBX Rubber Hub

B	D	P	R	PART NO.
3	15.5	11	R	9511-155-11
3	15.3	13	R	9511-153-13
3	15	15	R	9511-150-15
3	15	15	L	9512-150-15
3	14.8	17	R	9511-148-17
3	14.8	17	L	9512-148-17
3	14.5	19	R	9511-145-19
3	14.5	19	L	9512-145-19
3	14.3	21	R	9511-143-21
3	14.3	21	L	9512-143-21
3	16	13	R	9511-160-13

Aluminum 4 blade

RUBEX 4 RBX Rubber Hub

B	D	P	R	PART NO.
4	14.75	15	R	9513-148-15
4	14.5	17	R	9513-145-17
4	14.25	19	R	9513-143-19
4	14	21	R	9513-140-21



RUBEX™ STAINLESS STEEL

Interchangeable Hub Propellers

C 30~ 75 Horsepower (Thru Hub Exhaust)

Stainless steel 3 blade

RUBEX NS3 RBX Rubber Hub **NEW!**

B	D	P	R	PART NO.
3	11 5/8	11	R	9331-116-11
3	11 3/8	12	R	9331-114-12
3	11 1/8	13	R	9331-111-13
3	11 1/8	14	R	9331-111-14
3	11	15	R	9331-110-15

Stainless steel 4 blade

RUBEX C4 RBX Rubber Hub

B	D	P	R	PART NO.
4	11 1/2	12	R	9333-115-12
4	11 1/2	13	R	9333-115-13
4	11 1/2	14	R	9333-115-14

⊗ Notice:

1. Engine manufacturer recommends greasing the propeller shaft every 12 months.
2. Make sure all propeller hardware is installed correctly.



D 40~ 140 Horsepower (Thru Hub Exhaust)

Stainless steel 3 blade

RUBEX NS3 RBX Rubber Hub

B	D	P	R	PART NO.
3	13 3/4	13	R	9431-138-13
3	13 3/4	13	L	9432-138-13
3	13 1/2	15	R	9431-135-15
3	13 1/2	15	L	9432-135-15
3	13 1/4	17	R	9431-133-17
3	13 1/4	17	L	9432-133-17
3	13	19	R	9431-130-19
3	13	19	L	9432-130-19
3	13	21	R	9431-130-21

Stainless steel 4 blade

RUBEX HR4 RBX Rubber Hub

B	D	P	R	PART NO.
4	13 1/2	13	R	9453-135-13
4	13 1/2	13	L	9454-135-13
4	13 1/4	15	R	9453-133-15
4	13 1/4	15	L	9454-133-15
4	13	17	R	9453-130-17
4	13	17	L	9454-130-17
4	13	19	R	9453-130-19
4	13	19	L	9454-130-19
4	13	21	R	9453-130-21
4	13	21	L	9454-130-21



E 135~ 300 Horsepower (Thru Hub Exhaust)

Stainless steel 3 blade

RUBEX NS3 RBX Rubber Hub

B	D	P	R	PART NO.
3	14 1/2	15	R	9531-145-15
3	14 1/2	15	L	9532-145-15
3	14 1/4	17	R	9531-143-17
3	14 1/4	17	L	9532-143-17
3	14	19	R	9531-140-19
3	14	19	L	9532-140-19
3	14	21	R	9531-140-21
3	14	21	L	9532-140-21
3	14	23	R	9531-140-23
3	14	23	L	9532-140-23

Stainless steel 3 blade

RUBEX S3 RBX Rubber Hub

B	D	P	R	PART NO.
3	15 1/8	23	R	9561-151-23
3	15 1/8	24	R	9561-151-24
3	15 1/8	25	R	9561-151-25
3	15 1/8	26	R	9561-151-26
3	15 1/8	27	R	9561-151-27
3	15 1/8	28	R	9561-151-28

STAINLESS STEEL PROPELLERS

Stainless steel 4 blade

RUBEX HR4 RBX Rubber Hub

B	D	P	R	PART NO.
4	14 1/2	15	R	9553-145-15
4	14 1/2	15	L	9554-145-15
4	14 1/4	17	R	9553-143-17
4	14 1/4	17	L	9554-143-17
4	14 1/8	19	R	9553-141-19
4	14 1/8	19	L	9554-141-19
4	14	21	R	9553-140-21
4	14	21	L	9554-140-21
4	14	23	R	9553-140-23
4	14	23	L	9554-140-23

Stainless steel 3 blade

RUBEX L3 RBX Rubber Hub

B	D	P	R	PART NO.
3	15 3/4	15	R	9571-158-15
3	15 3/4	15	L	9572-158-15
3	15 1/2	17	R	9571-155-17
3	15 1/2	17	L	9572-155-17
3	15 1/4	19	R	9571-153-19
3	15 1/4	19	L	9572-153-19
3	15	21	R	9571-150-21
3	15	21	L	9572-150-21
3	14 3/4	23	R	9571-148-23
3	14 3/4	23	L	9572-148-23
3	14 1/2	25	R	9571-145-25
3	14 1/2	25	L	9572-145-25
3	14 1/2	27	R	9571-145-27
3	14 1/2	27	L	9572-145-27



Stainless steel 4 blade

RUBEX L4 RBX Rubber Hub

B	D	P	R	PART NO.
4	15 1/4	18	R	9573-153-18
4	15 1/4	18	L	9574-153-18
4	15 1/4	20	R	9573-153-20
4	15 1/4	20	L	9574-153-20
4	15 1/4	22	R	9573-153-22
4	15 1/4	22	L	9574-153-22
4	15 1/4	24	R	9573-153-24
4	15 1/4	24	L	9574-153-24
4	15 1/4	26	R	9573-153-26
4	15 1/4	26	L	9574-153-26
4	15 1/4	28	R	9573-153-28

Stainless steel 3 blade

RUBEX L3 Plus RBX Rubber Hub

B	D	P	R	PART NO.
3	16	17	R	9571-160-17
3	16	17	L	9572-160-17
3	16	19	R	9571-160-19
3	16	19	L	9572-160-19
3	15 3/4	21	R	9571-158-21
3	15 3/4	21	L	9572-158-21
3	15 5/8	23	R	9571-156-23
3	15 5/8	23	L	9572-156-23



(Hub Kit Not Included)
RBX Patent No : U.S 7,488,225

Important :
RBX Hub Kits
are required
for installation.



Hub Kits for RUBEX

RBX Patent No : U.S 7,488,225



• RUBEX HUB KIT APPLICATION CHART •

Manufacturer/Model	Hub Kit #	Prop Category	Manufacturer/Model	Hub Kit #	Prop Category
Evinrude/Johnson/BRP			Nissan/Tohatsu		
40~75HP, Small Gearcase - 3-3/8", 1975 & Newer 13 tooth spline	RBX-111	C	35HP(35B only) Thru 1984; 40HP 1984 & Newer, 50HP (All except 50C) 1992 & Newer, 13 tooth spline	RBX-116	C
45-75 HP, Lg. Gearcase - 4-1/4", 1968-present, 13 tooth spline	RBX-106	D	50 HP (50C only) 1987-91; 55HP 1981-88; 60A 1986 & Newer 70A/70B 1981 & Newer, 13 tooth spline	RBX-112	C
85-140 HP, 1969-present, 13 tooth spline	RBX-106	D	90-140 HP, 1987-present, 15 tooth spline	RBX-109	D
60 & 70HP, (4-Stroke), 1998-present 13 tooth spline	RBX-110	D	OMC/Cobra Sterndrives		
90, 115 HP (4-Stroke), 2003-present, 15 tooth spline	RBX-125	D	Model 400 Cobra, 1978 - 1991, 13 tooth spline	RBX-106	D
140 HP (4-Stroke), 2003-present, 15 tooth spline	RBX-126	D	Model 800/Cobra/King Cobra, 1978 - 1990, 15 tooth spline	RBX-101	E
90-140 HP, Lg. Gearcase, 1976-1990, 15 tooth spline	RBX-101	E	Model 800/Cobra/King Cobra, 1991 - 1994, 15 tooth spline	RBX-100	E
90-140 HP, Lg. Gearcase, 1991-present, 15 tooth spline	RBX-100	E	Cobra SX, 1994 - present, 19 tooth spline	RBX-105	E
150-300 HP, 1976-1990, 15 tooth spline	RBX-101	E	Suzuki		
150-300 HP, 1991-present, 15 tooth spline	RBX-100	E	DT50, 50M 1983-84; DT55 1985-97; DT60 1983-84 DT65 1985-97, 13 tooth spline	RBX-115	C
Force			DF70A, DF80A, DF90A (4-Stroke), 2009~, 15 tooth spline	RBX-150	D
40/50 HP 1995-98, 70 HP 1991-95, 75 HP 1996-98, 13 tooth spline	RBX-114	C	DF90, DF115 (4-Stroke), 2001-present, 15 tooth spline	RBX-125	D
75-150HP, 1995-present, 15 tooth spline	RBX-102	D	DF140 (4-Stroke), 2001-present, 15 tooth spline	RBX-126	D
Honda			75-140 HP, DF60 & DF70, 1979-present, 13 tooth spline	RBX-110	D
BF 35/45 1991-94; BF 40/50/50A 1995 & Newer, 13 tooth spline	RBX-113	C	DT150-225 HP, 1986-present, 2 stroke DF150-300 HP 15 tooth spline	RBX-104	E
75-90 HP, 1995-1998, 15 tooth spline	RBX-102	D	Yamaha		
75-90 HP, 1999-present, 115-130HP, 1998-present, 15 tooth spline	RBX-107	D	F30(4-Stroke) 2001-05; 40HP & 50HP (not T50), 1984 & Newer; 48 HP 1995 & Newer; 55HP 1976-95; F40(4-Stroke) 1999 & Newer; F50(4-Stroke) 1995 & Newer; 60HP 1976-91; F60(4-Stroke) 1999 & Newer, 13 tooth spline	RBX-117	C
115-130 HP, 1998-present, 15 tooth spline	RBX-107	D	T50, 1996-present, 15 tooth spline	RBX-108	D
BF 135HP, 150HP, 200 & 225 HP, 2003-present, 15 tooth spline	RBX-107	E	60-100 HP, including 4-stroke, 1984-present, 15 tooth spline	RBX-108	D
BF 135HP, 150HP, 200 & 225 HP, 2003-present, 15 tooth spline	RBX-107B	E	80-140 HP, 1978-1983, 15 tooth spline	RBX-102	D
Mercury/Mariner/Mercruiser			115HP, FS115 (4stroke), and 130 HP, 1984-present, 15 tooth spline	RBX-103	D
30 HP 1994 & Newer; 35 HP 1984-89; Model 402~500 1974-84; Model 650 1972-76; Model 700 1977-84; 40/50 HP (2&4-Stroke, Not Bigfoot) 1977 & Newer; 48 HP (Mariner) All Years; 55 HP (Mercury/Sea Pro/Marathon) 1995 & Newer; 60 HP (Not Bigfoot or Sea Pro) 1978 & Newer; 60 HP (Mariner) 1976; 70 HP Thru 1983; 13 Tooth spline	RBX-114	C	150-175 HP, 1978-1983, 15 tooth spline	RBX-102	E
60 HP Bigfoot, 15 tooth spline	RBX-102	D	150-300 HP, 1984-present, 15 tooth spline	RBX-103	E
70-140 HP (except 135 HP), 1961-present, XR-4, XR-6, 15 tooth	RBX-102	D	225 EFI (4stroke), 15 tooth spline	RBX-103	E
135 HP, 1987-present, 15 tooth spline	RBX-102	E+	F300, F350 (300, 350HP 4stroke V8 Engine), 17 tooth spline	RBX-127	E+
150-300 HP, 1978-present, 15 tooth spline	RBX-102	E	Sterndrives, 1989-1993, 15 tooth spline	RBX-103	E
Mercruiser Alpha One & Bravo One (less than 400HP), 15 tooth spline	RBX-102	E	Volvo		
1 1/4" propshaft, 19 tooth spline	RBX-123	E+	SX Sterndrives, 1994-present, 19 tooth spline	RBX-105	E
225 EFI (4 stroke) manufactured by Yamaha, 15 tooth spline	RBX-124	E			

You need a Hub Kit and a Prop for complete installation :

1. Locate Horsepower/Model and Year. 2. Read across to reference RUBEX™ Hub Kit/Propeller series. 3. Select propeller diameter & pitch from corresponding propeller series.

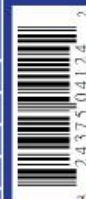
Rio-Tom is a registered trademark of the Brunswick Corporation.

Vortex is a registered trademark of Michigan Wheel Corporation.

OMC, Cobra, King Cobra, Cobra SX, Evinrude/Johnson/BRP are registered trademarks of the Bombardier Recreational Products Inc. Mercury, Mariner, Mercruiser, Typhoon, Quicksilver & Force are registered trademarks of the Brunswick Corporation. Volvo is a registered trademark of Volvo Penta Marine Products L.P. Suzuki is a registered trademark of the Suzuki Motor Corp. Yamaha is a registered trademark of the Yamaha Corp. Honda is a registered trademark of the Honda Motor Co., Ltd. Tohatsu is a registered trademark of the Tohatsu Corp. Nissan is a registered trademark of the Nissan (Jidosha) Motor Corp.



solas.propellers.co.nz



9990268 DEC. 2011 2437504124